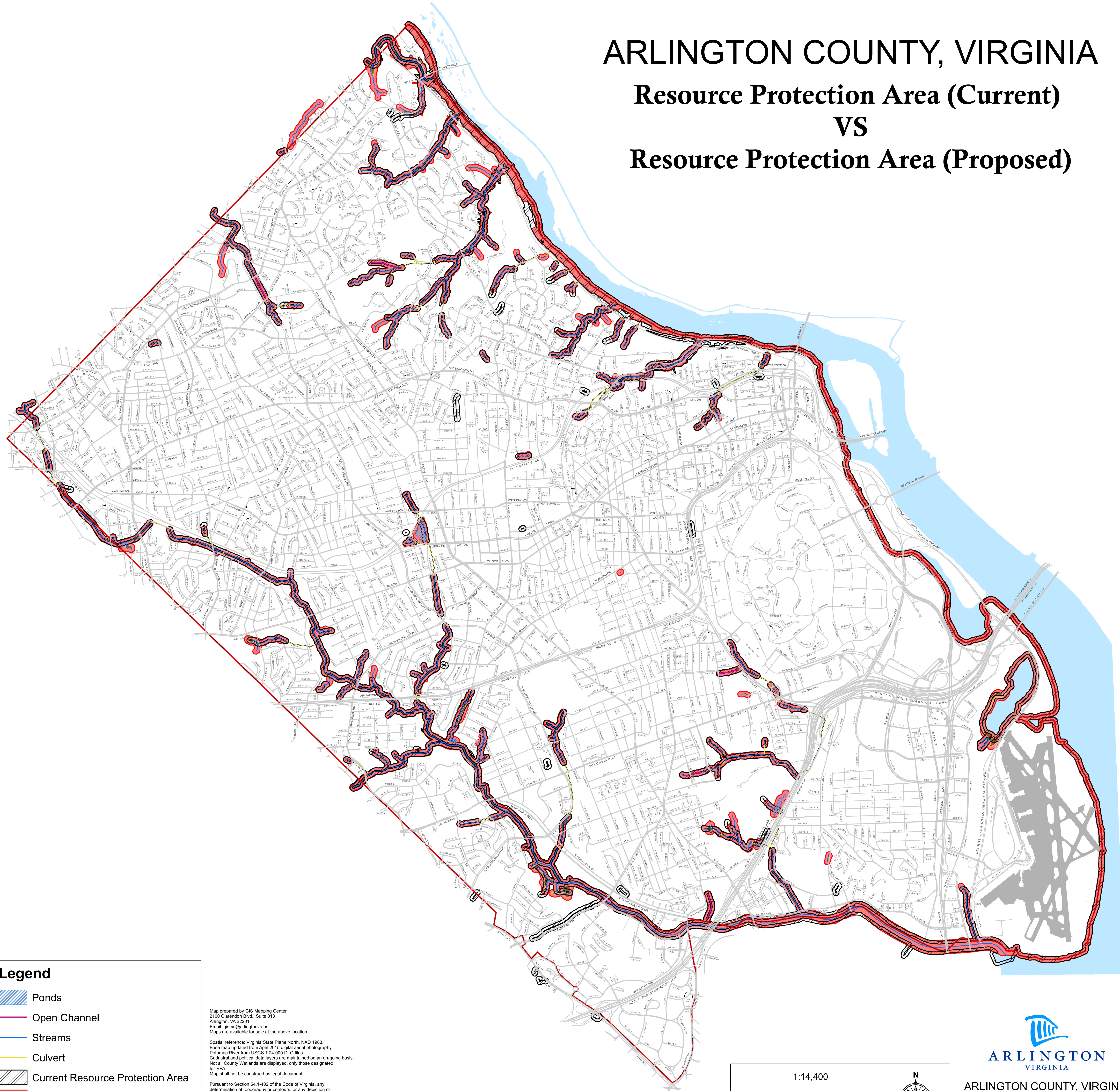


ARLINGTON COUNTY, VIRGINIA





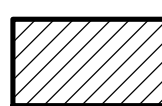


Resource Protection Area (Current)

VS

Resource Protection Area (Proposed)



Legend

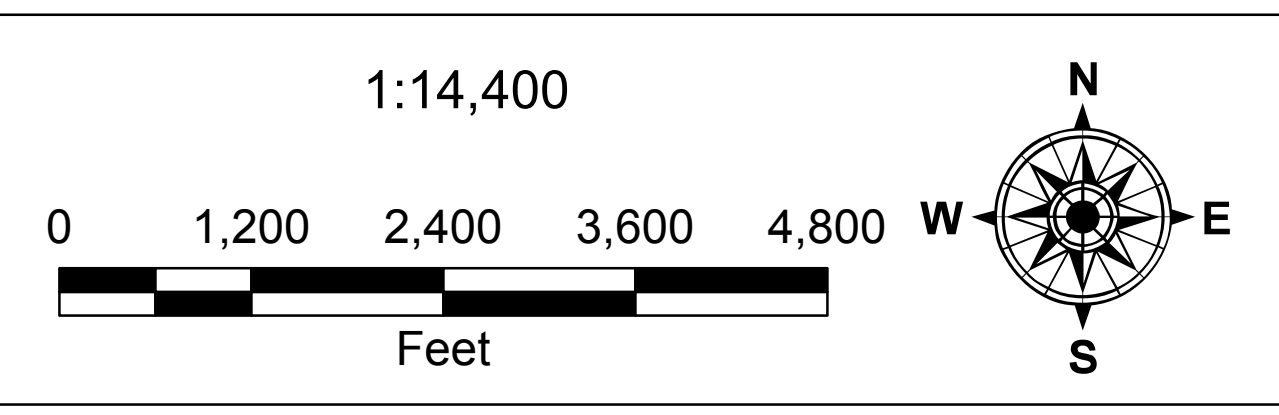
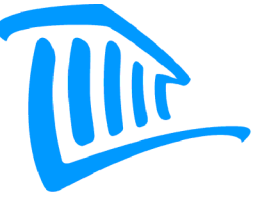
-  Ponds
-  Open Channel
-  Streams
-  Culvert
-  Current Resource Protection Area
-  Proposed RPA
-  Wetland Features: Designated RPA

Map prepared by GIS Mapping Center
 2100 Clarendon Blvd., Suite 813
 Arlington, VA 22201
 Email: gismc@arlingtonva.us
 Maps are available for sale at the above location.

Spatial reference: Virginia State Plane North, NAD 1983.
 Base map updated from April 2015 digital aerial photography.
 Potomac River from USGS 1:24,000 DLG files.
 Cadastral and political data layers are maintained on an on-going basis.
 Not all County Wetlands are displayed, only those designated for RPA.
 Map shall not be construed as legal document.

Pursuant to Section 54.1-402 of the Code of Virginia, any determination of topography or contours, or any depiction of physical improvements, property lines or boundaries is for general information only and shall not be used for the design, modification, or construction of improvements to real property or for flood plain determination.

Map © 2017 Arlington County, VA
 Printed: April 2017

ARLINGTON
VIRGINIA

ARLINGTON COUNTY, VIRGINIA

Resource Protection Area (Current)
 VS
 Resource Protection Area (Proposed)